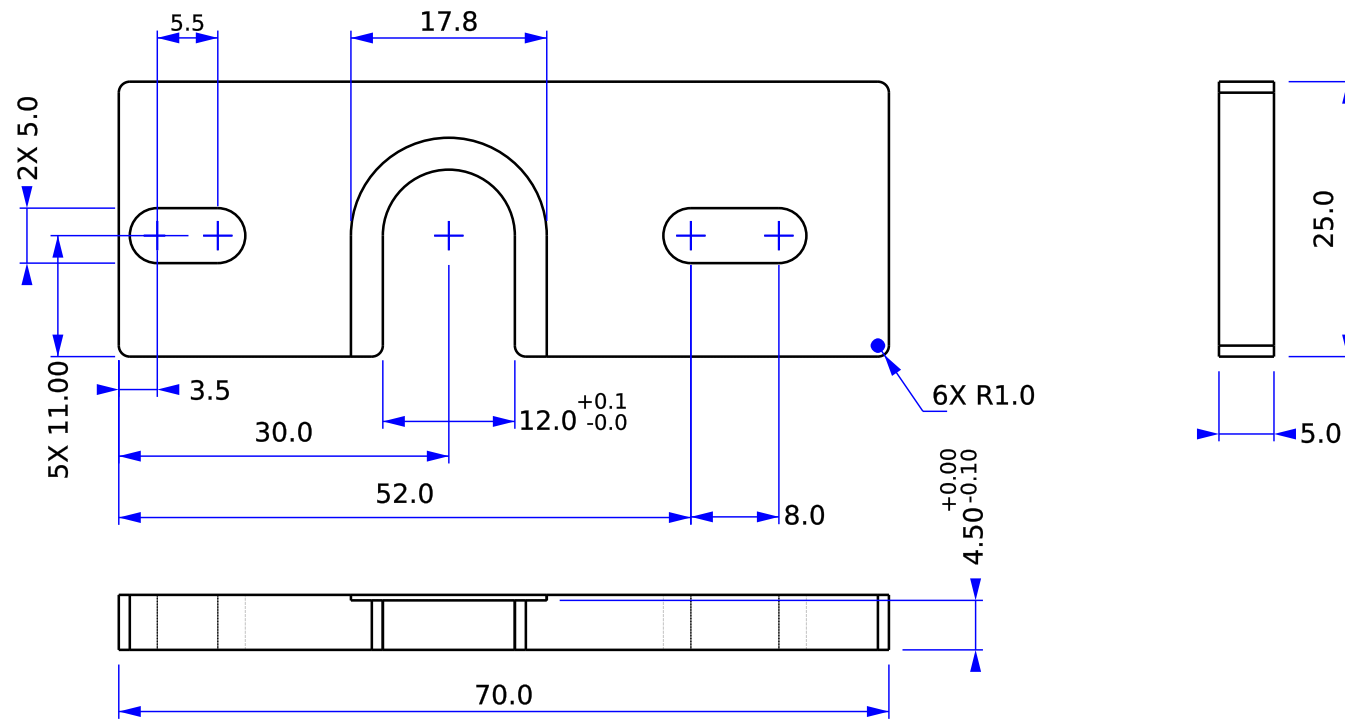
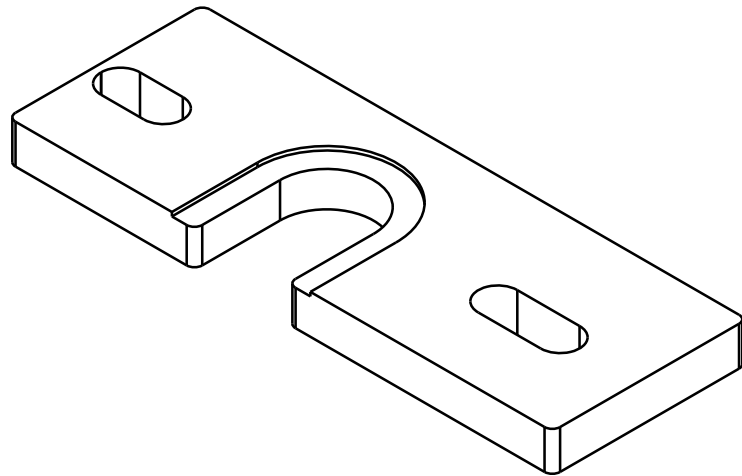


Rev	Date	Description
A	10.12.16	Name changed to match product (MOARstruder).
IR	06.22.16	Initial release.



- Notes:
1. Material: 6061-T6 Aluminum
 2. Parts must be RoHS compliant.
 3. Remove all burrs and shavings.



DRAWN BY: bam	DATE: 6.22.16
MATERIAL: See Notes	
UNLESS OTHERWISE SPECIFIED DIMENSIONS ARE IN MILLIMETERS. TOLERANCES ARE:	
DECIMALS .X±.75 .XX±.25 .XXX±.125 .XXXX±.050	ANGLES X°±1° 63
BREAK EDGES 0.1/0.5 FILLET RADIUS 0.1/0.5	



626 West 66th Street
Loveland, Colorado 80538, USA
Phone +1-970-377-1111
www.alephobjects.com

TITLE MOARstruder-mount-plate			
SIZE A	DWG NO. PP-MP0156_revA	REV. A	
SCALE 2:1	DO NOT SCALE DRAWING	SHEET	1 of 1