

PP-MP0232: Motor Mount Ambidextrous

Oliver Darling

November 9, 2018

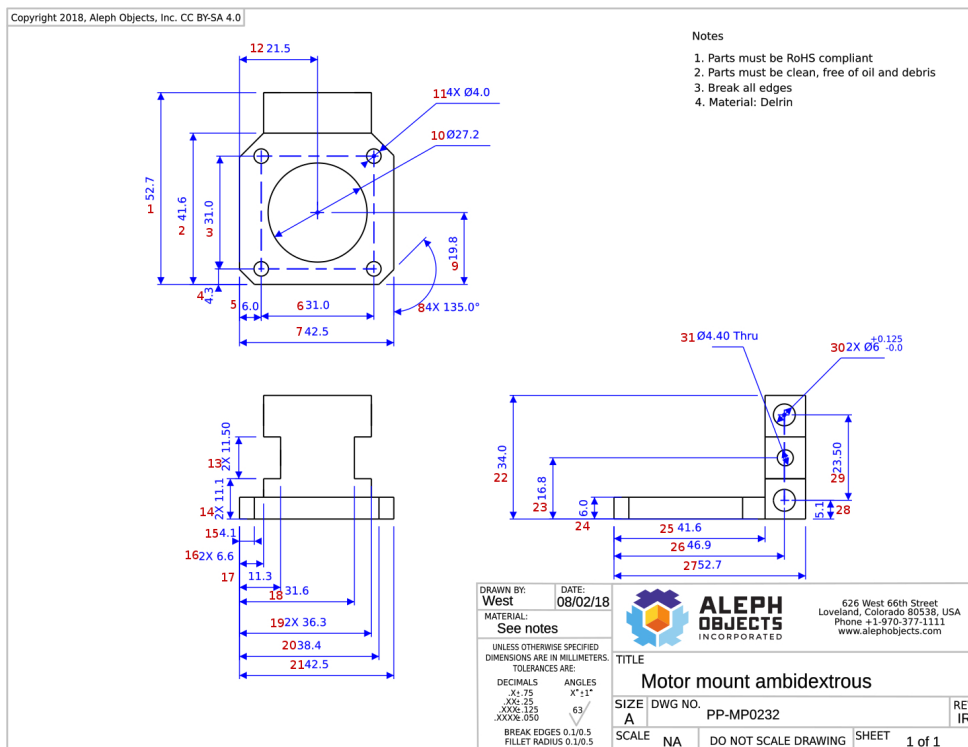


Figure 1: Schematic of PP-MP0232.

1 Dimensions

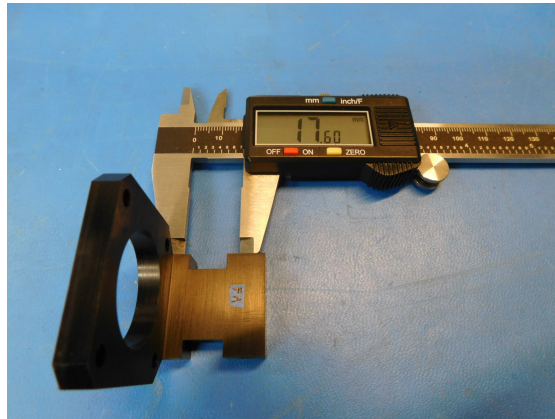


Figure 2: Dimension 29.

A standard set of calipers was used for all measurements on this part. In addition a 6.0mm pin gauge was used to verify the holes for each of the smooth rods before measurements were taken.

Item	Dimension	Tolerance	Mean	Fallout Rate
Dim23	16.8	± 0.75	16.87	0%
Dim28	5.1	± 0.75	5.10	0%
Dim29	23.50	± 0.25	23.55	0.009%
Dim30	$\varnothing 6.0$	+0.125 -0.0	6.05	4.60%
Dim31	$\varnothing 4.40$	± 0.25	4.40	0.001%