

# PP-FP0152: Corner Bracket

Oliver Darling

October 30, 2018

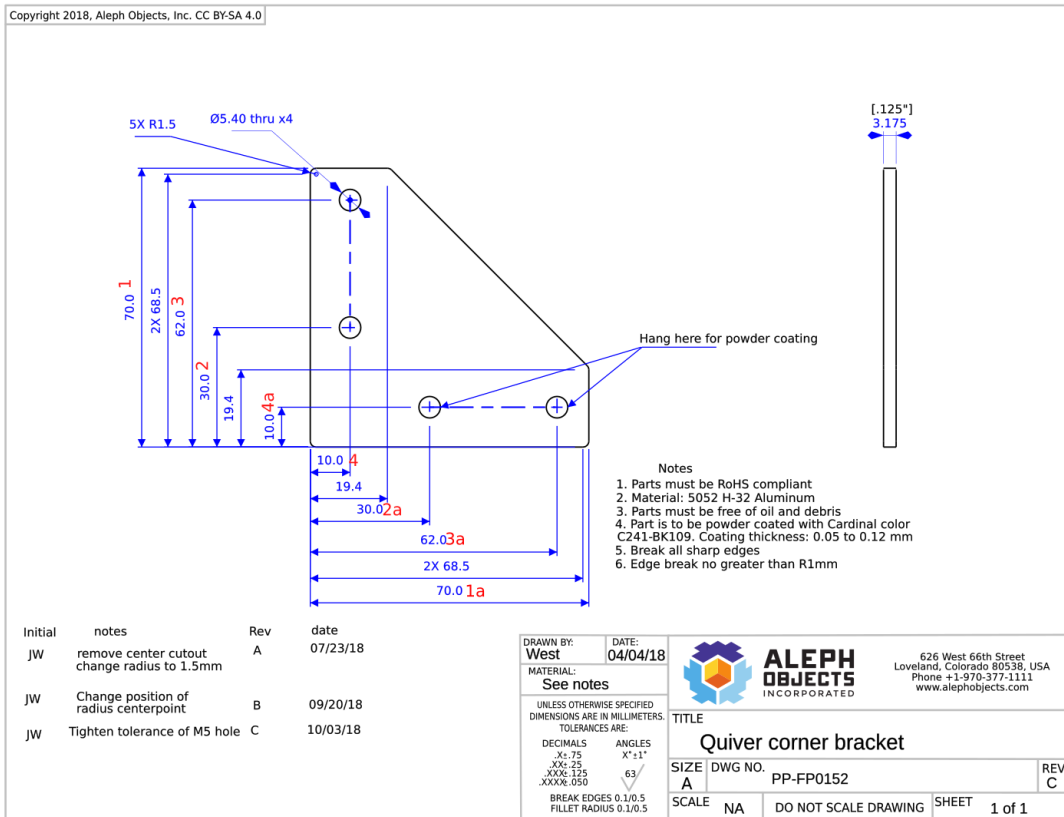


Figure 1: Schematic of PP-FP0153.

## 1 Dimension 01

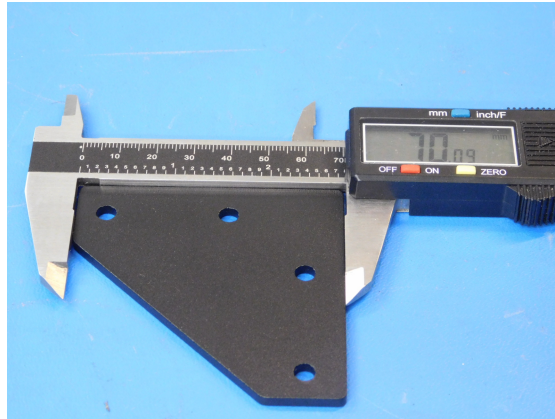


Figure 2: Dimension 01

Using a set of calipers we measure the lengths of the corner brackets to  $70.0 \pm 0.75\text{mm}$ , as shown in Figure 2. This results in an upper control limit of  $70.75\text{mm}$  and a lower control limit of  $69.25\text{mm}$ .

## 2 Dimension 02, 03, & 04

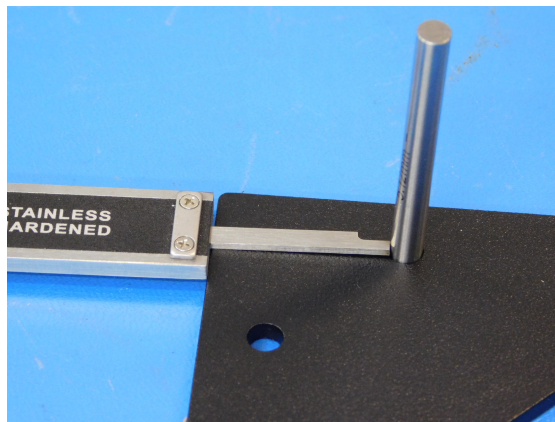


Figure 3: Dimension 02

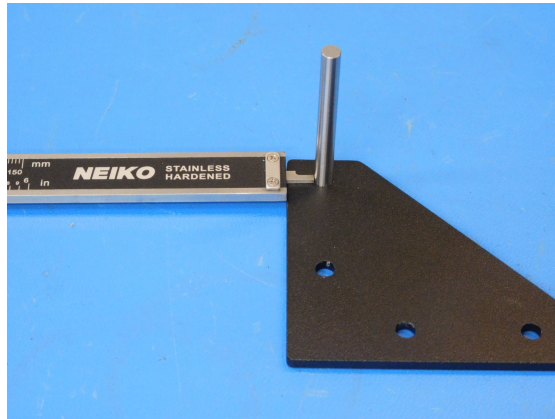


Figure 4: Dimension 04

Using the calipers we can measure the alignment of each of the holes along each edge. The first two holes, or dimension 02 will be measured to  $30.0 \pm 0.75\text{mm}$  with a upper control limit of  $30.75\text{mm}$  and a lower control limit of  $29.25\text{mm}$ .

The second set of holes will be measured to  $62.0 \pm 0.75\text{mm}$ , resulting in a upper control limit of  $62.75\text{mm}$  and a lower control limit of  $61.25\text{mm}$ .

Last measurement will be each hole from their respective closes edge measuring to  $10.0 \pm 0.75\text{mm}$ . This will result in a upper control limit of  $10.75\text{mm}$  and a lower control limit of  $9.25\text{mm}$ .

### 3 Dimension 05



Figure 5: Dimension 05

Using the micrometer to measure the thickness of the part to  $3.175 \pm 0.125\text{mm}$ , resulting in a upper limit of  $3.3\text{mm}$  and a lower limit of  $3.05\text{mm}$ .