

# PP-MP0231: Bottom Plate, Quiver

Oliver Darling

November 7, 2018

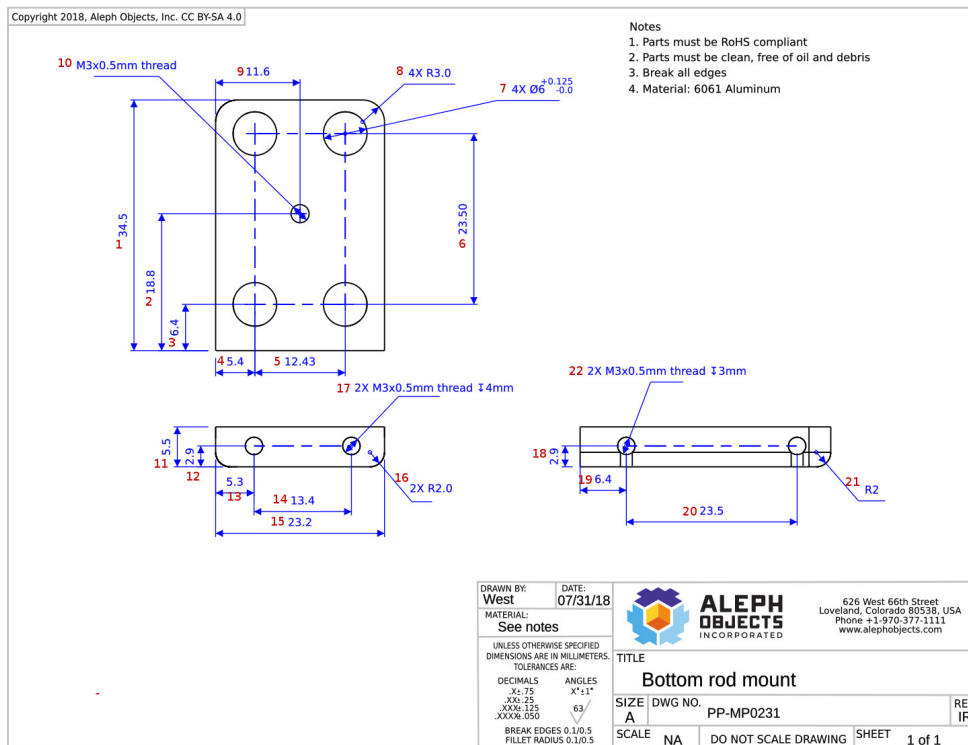


Figure 1: Schematic of PP-FP0154.

# 1 Dimensions

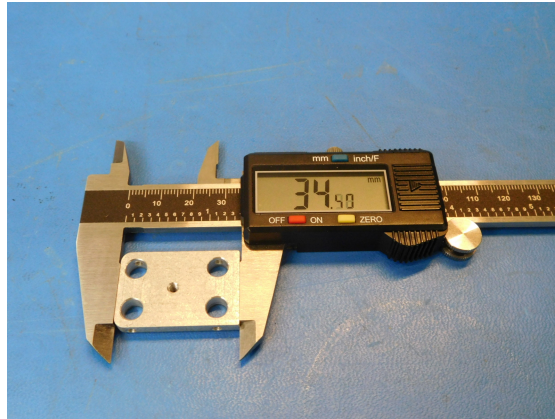


Figure 2: Dimension 01.



Figure 3: Dimension 06

To find the critical dimensions of this part all we need is a set of calipers. Important to note that when taking the distance from a hole, as seen in Figure [3], we need to make sure we remember to add the radius of each hole that we are referencing.

| Item  | Dimension | Tolerance      | Mean  | Fallout Rate |
|-------|-----------|----------------|-------|--------------|
| Dim01 | 34.5      | ± 0.75         | 34.49 | 0%           |
| Dim02 | 18.8      | ± 0.75         | 18.75 | 5.49%        |
| Dim03 | 6.4       | ± 0.75         | 6.37  | 0%           |
| Dim04 | 5.4       | ± 0.75         | 5.40  | 0%           |
| Dim05 | 12.43     | ± 0.25         | 12.42 | 1.81%        |
| Dim06 | 23.5      | ± 0.25         | 23.48 | 0%           |
| Dim07 | ∅6        | +0.125<br>-0.0 | 6.05  | 4.25%        |
| Dim09 | 11.6      | ± 0.75         | 11.59 | 0%           |
| Dim15 | 23.2      | ± 0.75         | 23.23 | 0%           |