

HD-BU0029: IGUS Bushing RJMP-01-12

Franklin McGowan

October 31, 2018

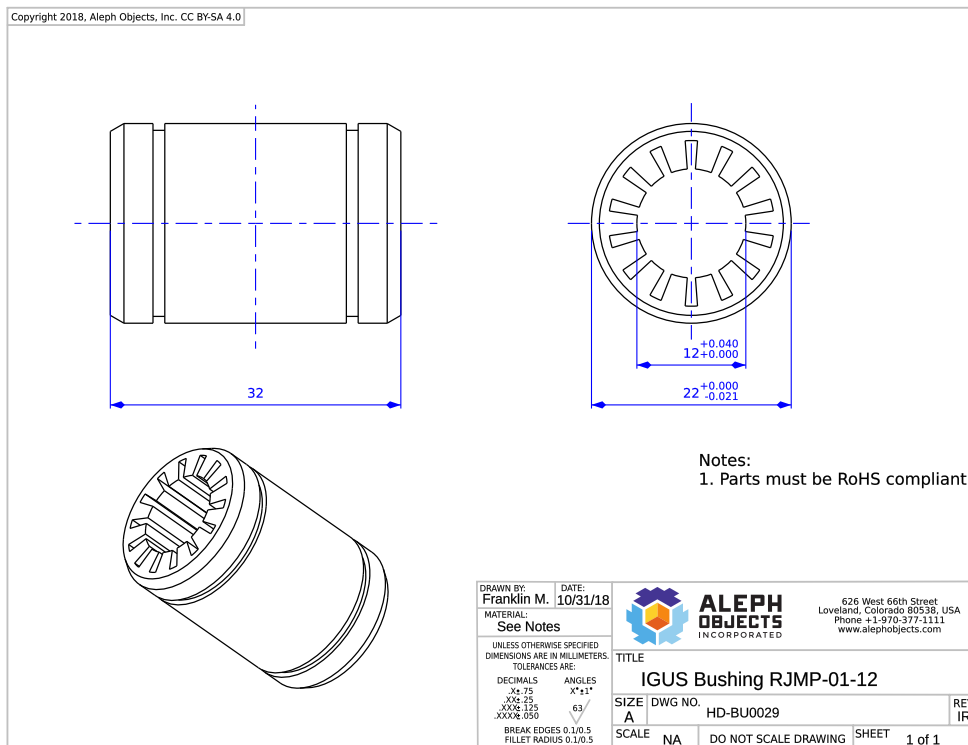


Figure 1: Diagram of HD-BU0029 (RJMP-01-12).

1 Dimension 01

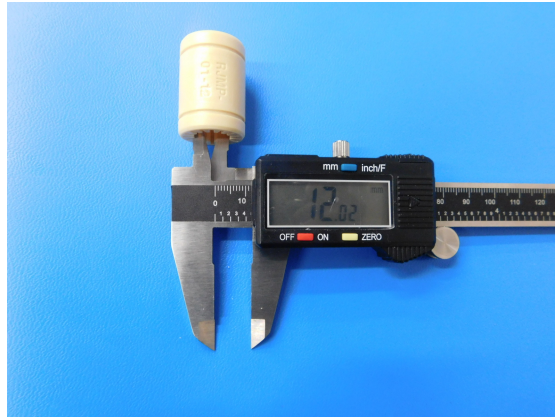


Figure 2: Dimension 01

Using a set of calipers we measure the inner diameter (D1) of the IGUS high precision bushing, the diameter of the interior of the sleeve bearing, which has a tolerance of $12.0(+0.000mm, +.040mm)$, as shown in Figure 2. This results in an upper control limit of $12.040mm$ and a lower control limit of $12.000mm$.

2 Dimension 02

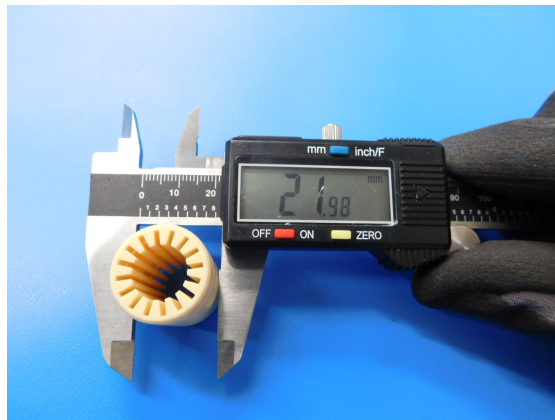


Figure 3: Dimension 02

Using the calipers we can measure the outer diameter of the high precision bushing (D2), as shown in Figure 3, which has an ISO tolerance zone of H7. For the IGUS RJMP-01-12, this will equate to $-0.0210mm$. This results in an upper control limit of $22.000mm$ and a lower control limit of $21.979mm$.