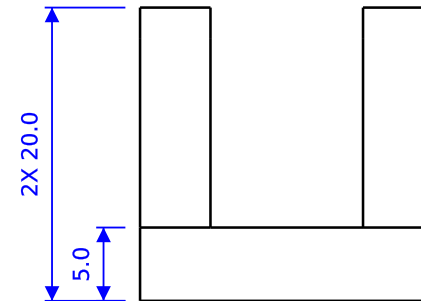
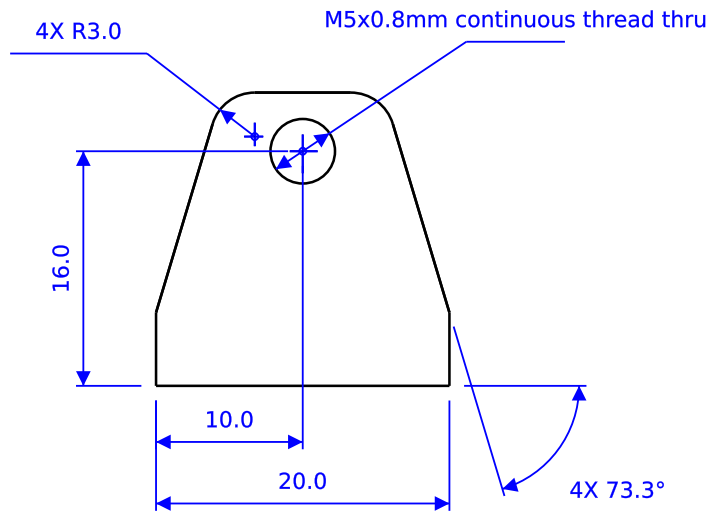
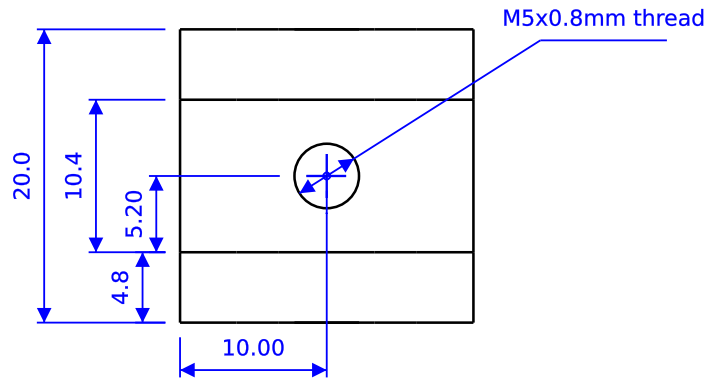


Notes

1. Parts must be RoHS compliant
2. Parts must be clean, free of oil and debris
3. Break all edges
4. Material: 303 SST



DRAWN BY: <b>West</b>	DATE: <b>01/11/18</b>
MATERIAL: <b>See notes</b>	
UNLESS OTHERWISE SPECIFIED DIMENSIONS ARE IN MILLIMETERS. TOLERANCES ARE:	
DECIMALS .X±.75 .XX±.25 .XXX±.125 .XXXX±.050	ANGLES X°±1°  63
BREAK EDGES 0.1/0.5 FILLET RADIUS 0.1/0.5	



626 West 66th Street  
 Loveland, Colorado 80538, USA  
 Phone +1-970-377-1111  
 www.alephobjects.com

TITLE <b>YZ idler</b>			
SIZE <b>A</b>	DWG NO. <b>PP-MP0225</b>	REV. <b>IR</b>	
SCALE <b>NA</b>	<b>DO NOT SCALE DRAWING</b>	SHEET	<b>1 of 1</b>