

HD-RD0070 6mm Smooth Rod

Oliver Darling

October 19, 2018

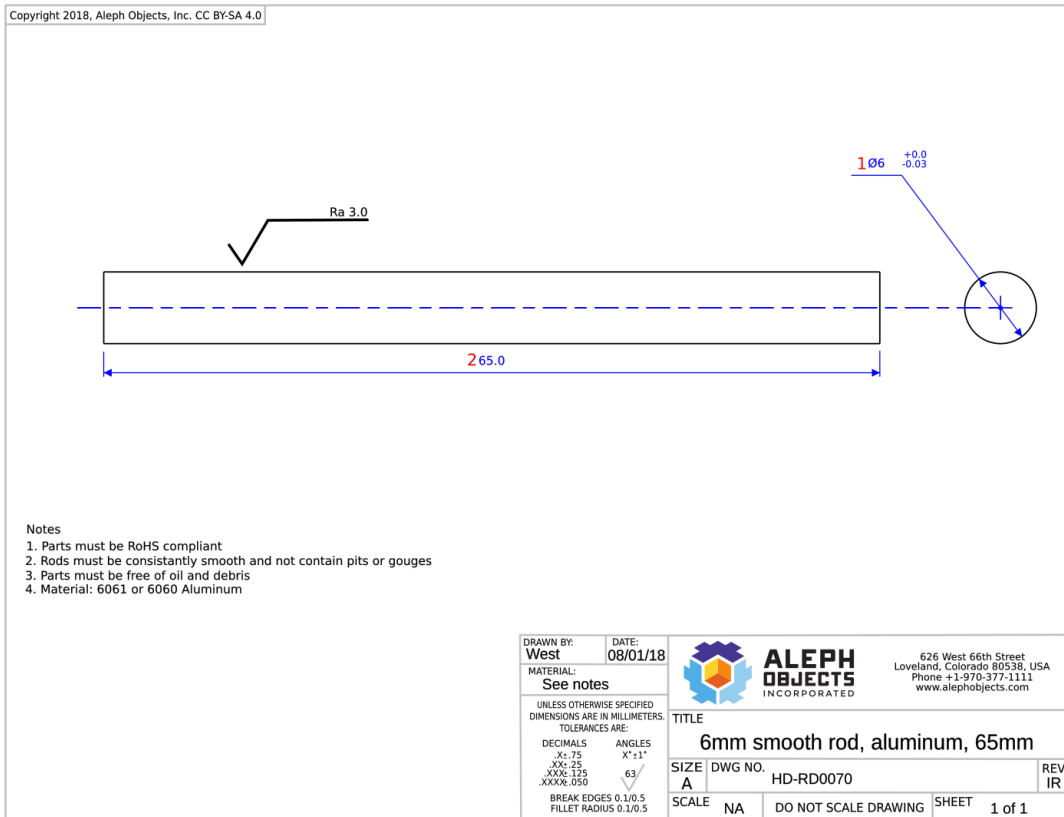


Figure 1: Schematic of PP-FP0153.

1 Dimension 1



Figure 2: Dimension 01

Use a micrometer to measure the diameter of the rod in order to check tolerance. The rod should measure a radius between 6.00mm , our upper control limit, and 5.97mm , the lower control limit.

2 Dimension 1



Figure 3: Dimension 02

Use a caliper to determine if the rod is within the tolerance limit of $65.0 \pm 0.75\text{mm}$. This results in an upper control limit of 65.75mm and a lower control limit of 64.25 .