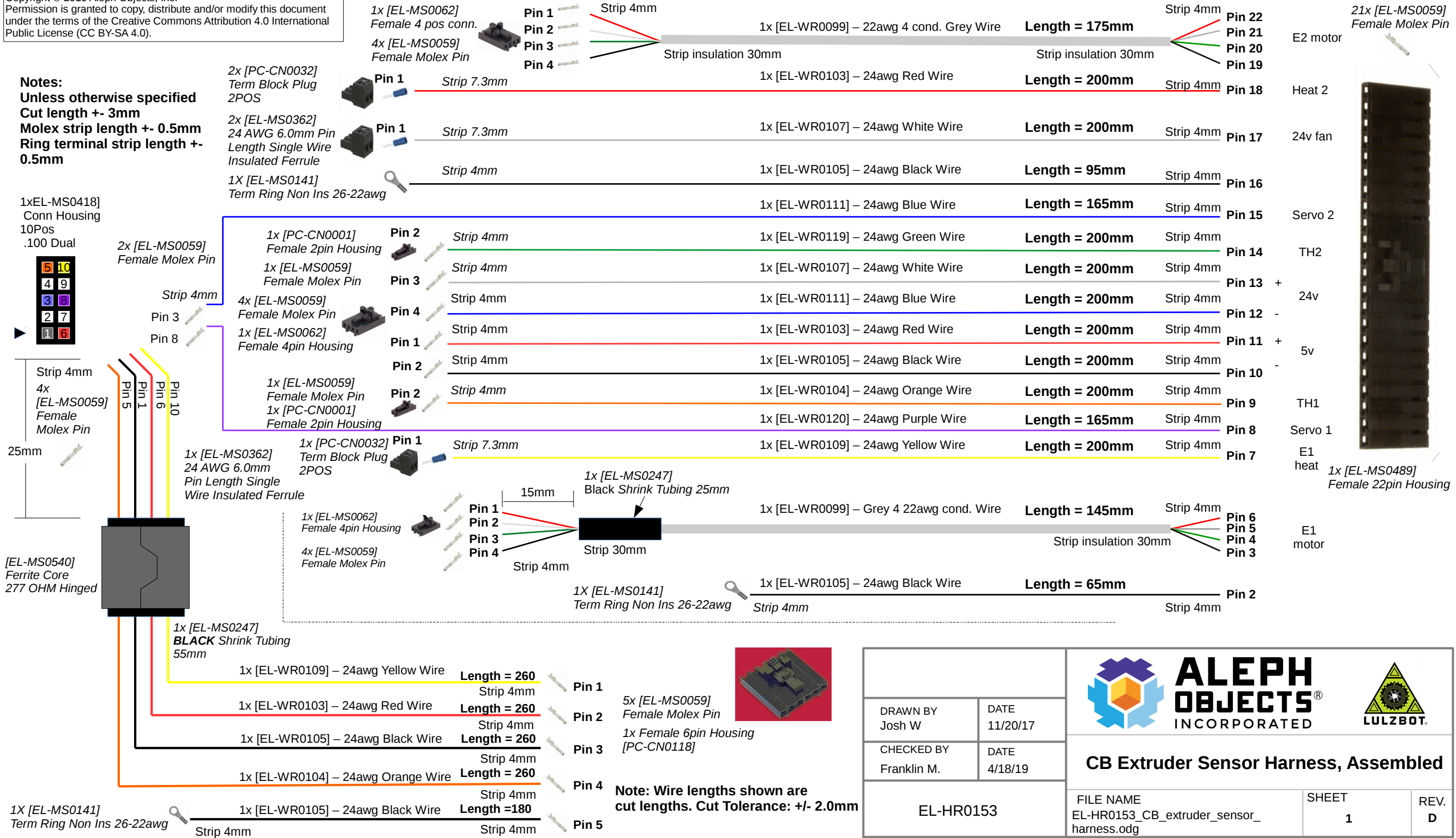
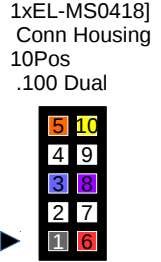


Notes:
 Unless otherwise specified
 Cut length +/- 3mm
 Molex strip length +/- 0.5mm
 Ring terminal strip length +/- 0.5mm



DRAWN BY Josh W		DATE 11/20/17	
CHECKED BY Franklin M.		DATE 4/18/19	
EL-HR0153			

CB Extruder Sensor Harness, Assembled

FILE NAME EL-HR0153_CB_extruder_sensor_harness.odg	SHEET 1	REV. D
---	------------	-----------

Note: Wire lengths shown are cut lengths. Cut Tolerance: +/- 2.0mm

AO P/n	qty	unit	Supplier	supplier P/n
EL-MS0141	3	pce	tti	P22-4R-M
EL-MS0062	3	pce	sager	50579404
EL-MS0059	46	pce	tti	16-02-0086
PC-CN0032	3	pce	tti	395300002
EL-MS0362	3	pce	digikey	FSD74-8-D
EL-MS0418	1	pce	digikey	22552101
EL-MS0489	1	pce	mouser	538-50-57-9422
PC-CN0118	1	pce	digikey	WM2904-ND
EL-MS0247	80	mm	electronics distributors corp	88-01870
EL-WR0105	800	mm	allcable	HU1569247BK
EL-WR0099	320	mm	allcable	C0762A.41.10
EL-WR0103	660	mm	allcable	HU1569247RD
EL-WR0107	400	mm	allcable	HU1569247WE
EL-WR0111	365	mm	allcable	HU1569247BE
EL-WR0119	200	mm	allcable	HU1569247GN
EL-WR0104	460	mm	allcable	HU1569247OE
EL-WR0120	165	mm	allcable	HU1569247VT
EL-WR0109	460	mm	allcable	HU1569247YW
EL-MS0540	1	pce	digikey	240-2344-ND

Rev	Date	Changes	Change By
A	1/7/19	Add clip on ferrite and heat shrink tubing to sensor/ servo wires	JW
B	1/22/19	Change servo 1 from pin 7 to pin 8	JW
C	1/30/19	Add strip tolerance	JW
D	2/4/19	Change position of ground wire so pin out will be sequential	JW