

# HD-BU0039: IGUS Bushing RJUM-03-10

Franklin McGowan

October 31, 2018

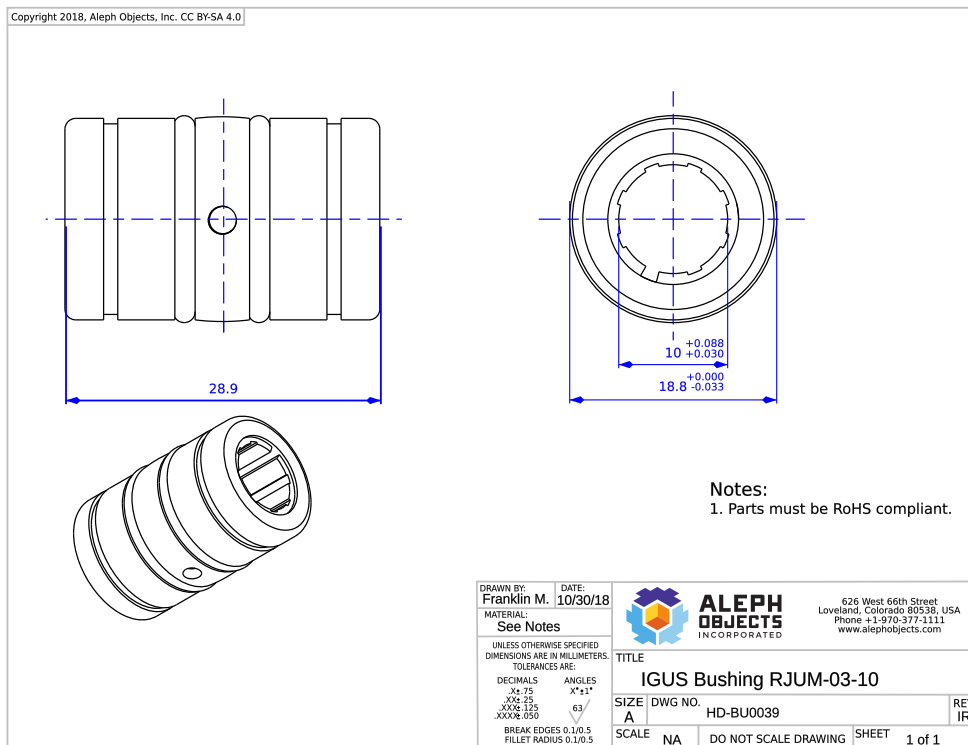


Figure 1: Diagram of HD-BU0039 (RJUM-03-10).

## 1 Dimension 01



Figure 2: Dimension 01

Using a set of calipers we measure the inner diameter (D1) of the IGUS bushing, the diameter of the interior of the sleeve bearing, which has a tolerance of  $10.0(+0.03, +.088mm)$ , as shown in Figure 2. This results in an upper control limit of  $10.088mm$  and a lower control limit of  $10.030mm$ .

## 2 Dimension 02



Figure 3: Dimension 02

Using the calipers we can measure the outer diameter of the aluminum housing (D2), as shown in Figure 3, which has an ISO tolerance zone of H8. For the IGUS RJUM-03-10 this will equate to  $-0.033mm$ . This results in an upper control limit of  $18.8mm$  and a lower control limit of  $18.767mm$ .