

PP-FP0154: Titan Hobb Bolt and Gear

Oliver Darling

November 6, 2018

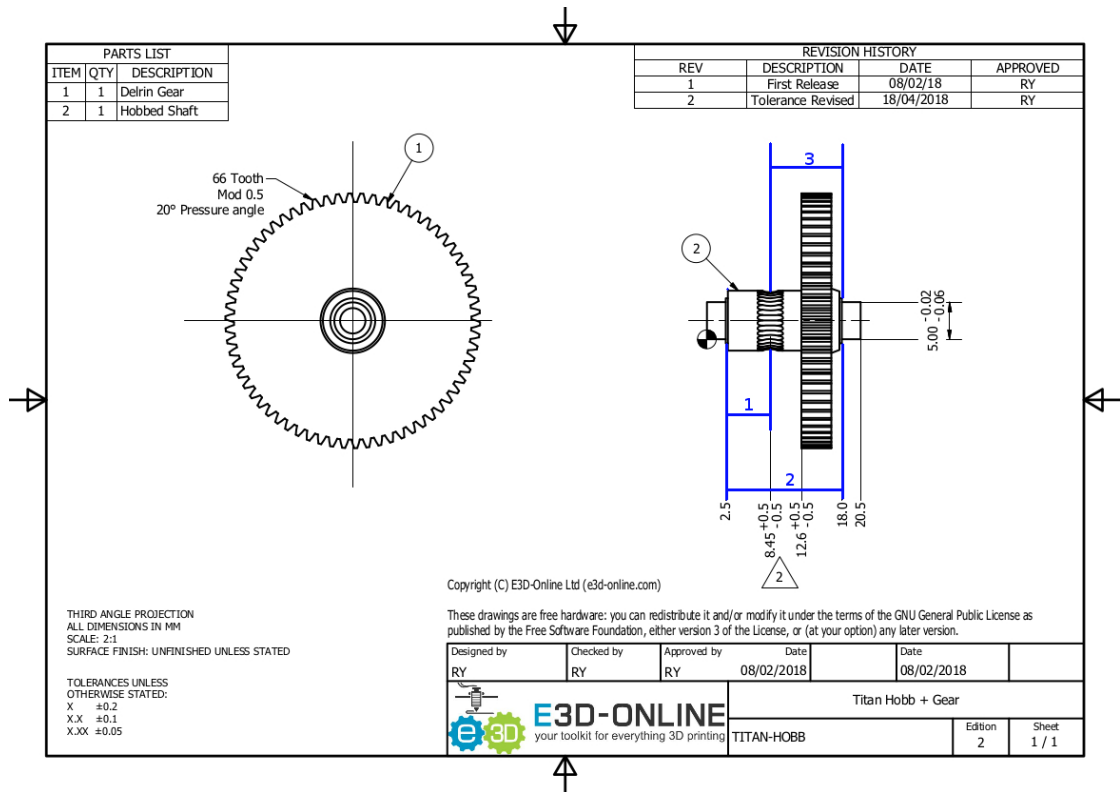


Figure 1: Schematic of PP-FP0154.

1 Dimension 01, 02, and 03

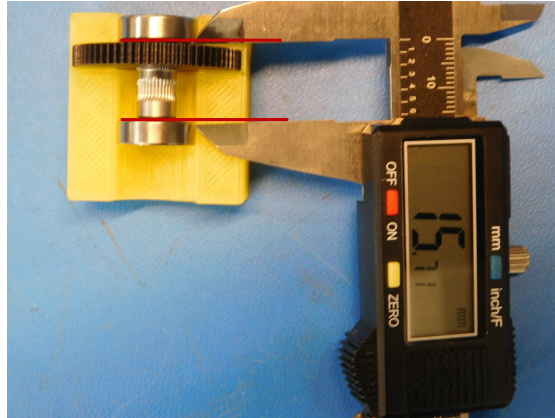


Figure 2: Dimension 02

We want to measure the distance between the bearing on the right side and the hobb profile to ensure it will engage with the path of the filament. The easiest way of doing that is using 2 $\varnothing 16mm$ bearings. Once we have obtained dimensions 01 and 02 we can use the following equation to find dimension 03.

$$[Dimension02] - [Dimension01] = [Dimension03] \quad (1)$$

The final dimension should be around $9.55 \pm 0.5mm$ resulting in a upper control limit of $10.05mm$ and a lower control limit of $9.05mm$.