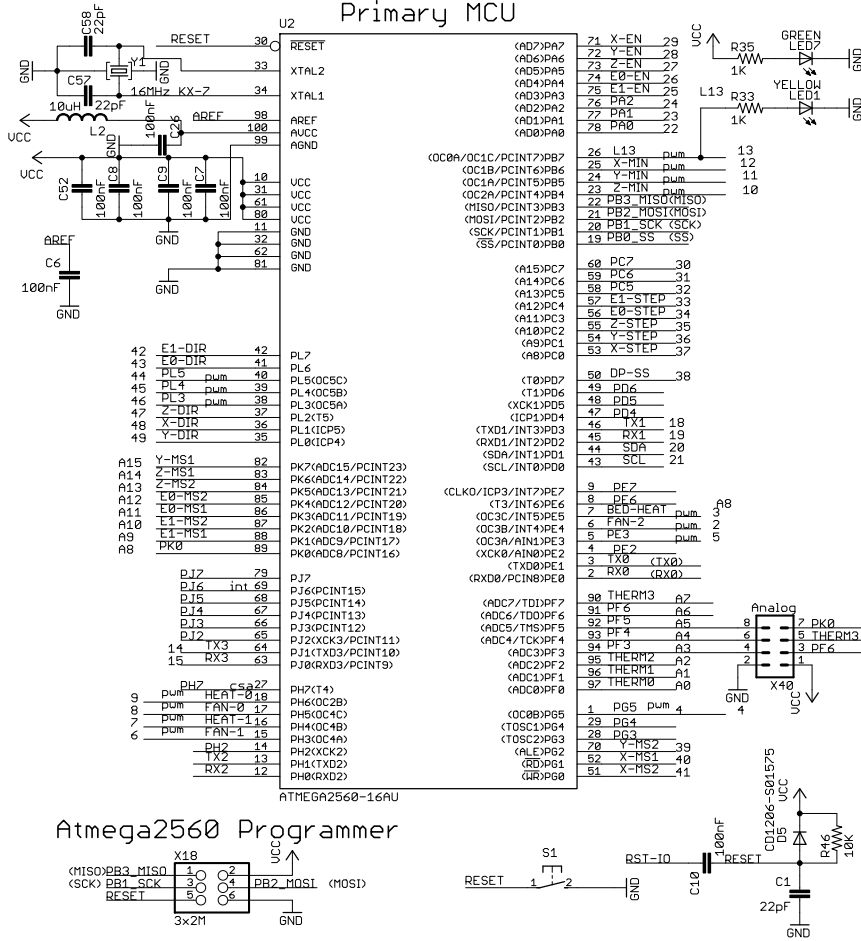


RAMBo 1.3 L

(R)epRap (A)rduino-(M)ega-compatible (M)other (Bo)ard
 Primary MCU



Reference Designs ARE PROVIDED "AS IS" AND "WITH ALL FAULTS". We DISCLAIM ALL OTHER WARRANTIES, EXPRESS OR IMPLIED, REGARDING PRODUCTS, INCLUDING BUT NOT LIMITED TO, ANY IMPLIED WARRANTIES OF MERCHANTABILITY OR FITNESS FOR A PARTICULAR PURPOSE.

We may make changes to specifications and product descriptions at any time, without notice.

The Customer must not rely on the absence or characteristics of any features or instructions marked "reserved" or "undefined."

We reserve these for future definition and shall have no responsibility whatsoever for conflicts or incompatibilities arising from future changes to them. The product information on the Web Site or Materials is subject to change without notice.

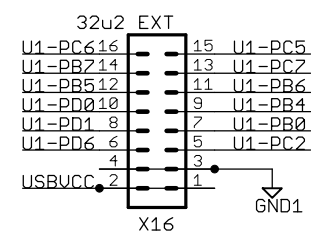
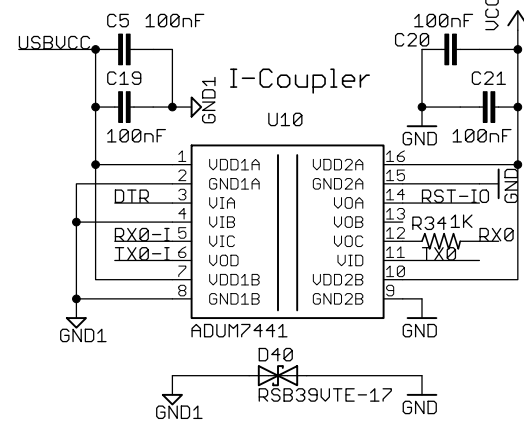
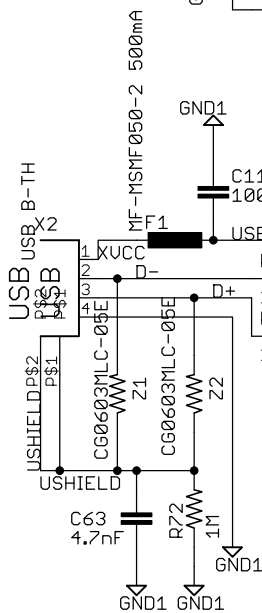
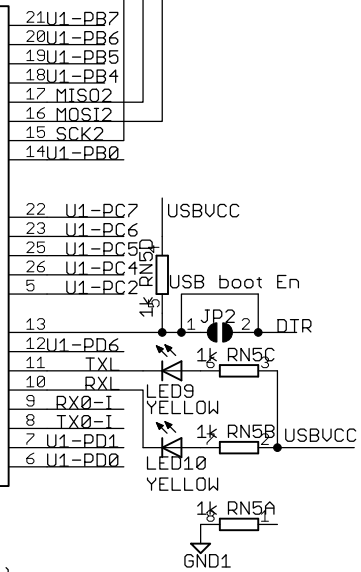
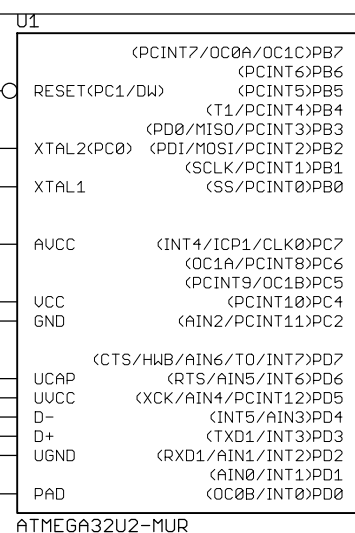
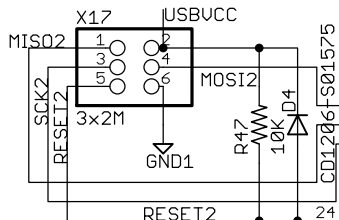
Do not finalize a design with this information.

Open Source Hardware Based on work by the Arduino Team and the RepRap project.

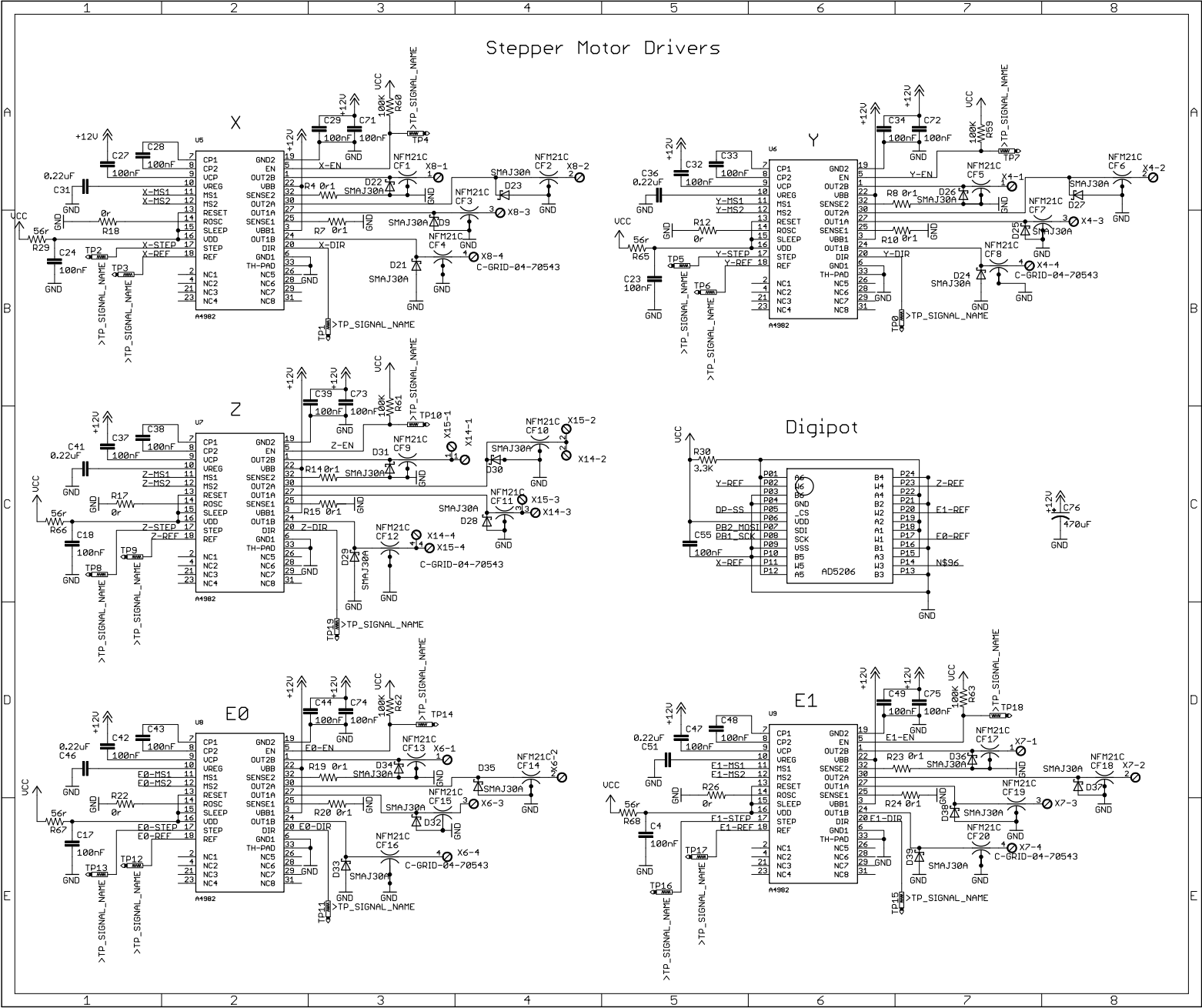
Copyright 2014 - UltiMachine -Johnny,Britt,Dorothy,Lee,Bruce

USB to Serial

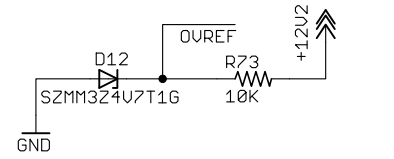
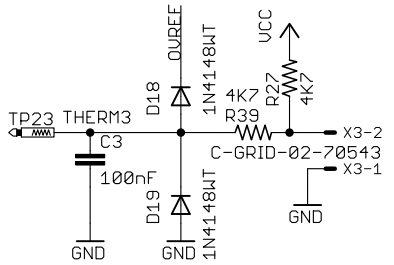
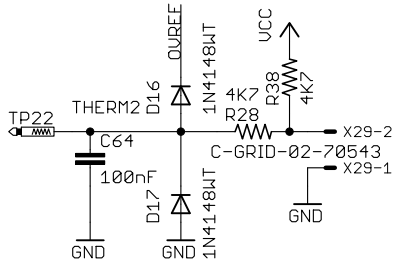
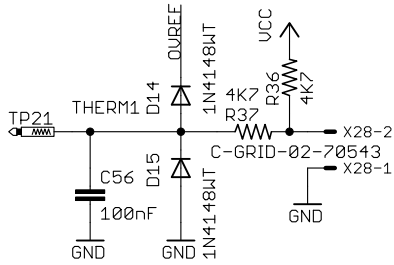
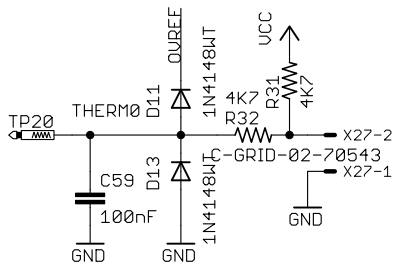
32u2 Programmer



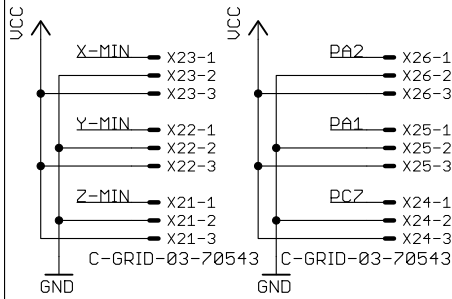
Stepper Motor Drivers



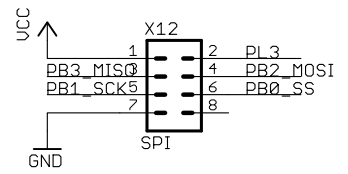
Thermistors



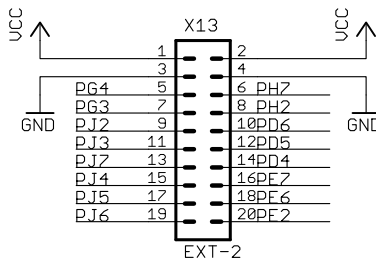
Endstops



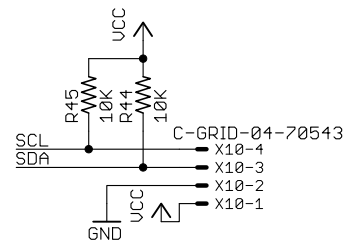
SPI Extension



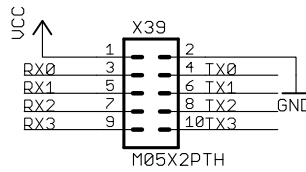
Extension 2



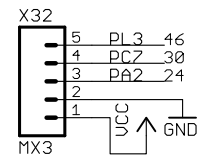
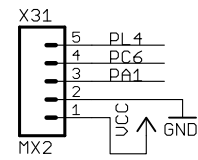
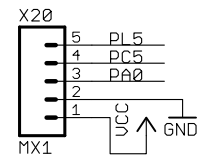
I2C Expansion



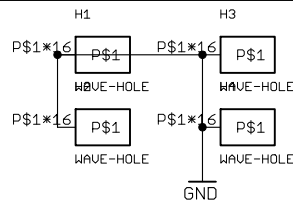
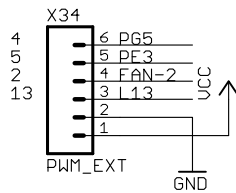
Serial Extension



Motor Extensions



PWM Extension



Mosfets

