

Notes:

1. Material: RoHS compliant 12AWG (.08") Aluminum
2. Part is to be Black Anodized. Mask all threads prior to coating.

DRAWN BY
SINNEMA 5/28/13

MATERIAL
See Notes

UNLESS OTHERWISE SPECIFIED
DIMENSIONS ARE IN MILLIMETERS.
TOLERANCES ARE:

DECIMALS	ANGLES
.X ± .75	X° ± 1°
.XX ± .25	
.XXX ± .125	
.XXXX ± .050	

BREAK EDGES .005/.020
FILLET RADIUS .005/.020



Sinnema Design Services

seth.sinnema@gmail.com
Phone: (303) 250-8218
Fax: 1-267-393-7872

TITLE

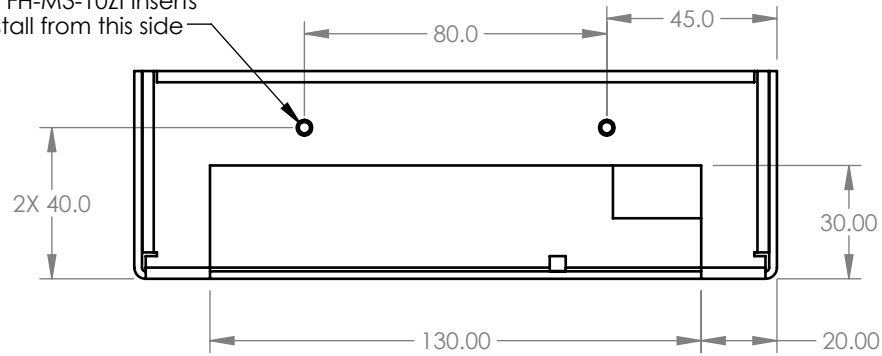
Sheet Metal Enclosure

SIZE A DWG NO.

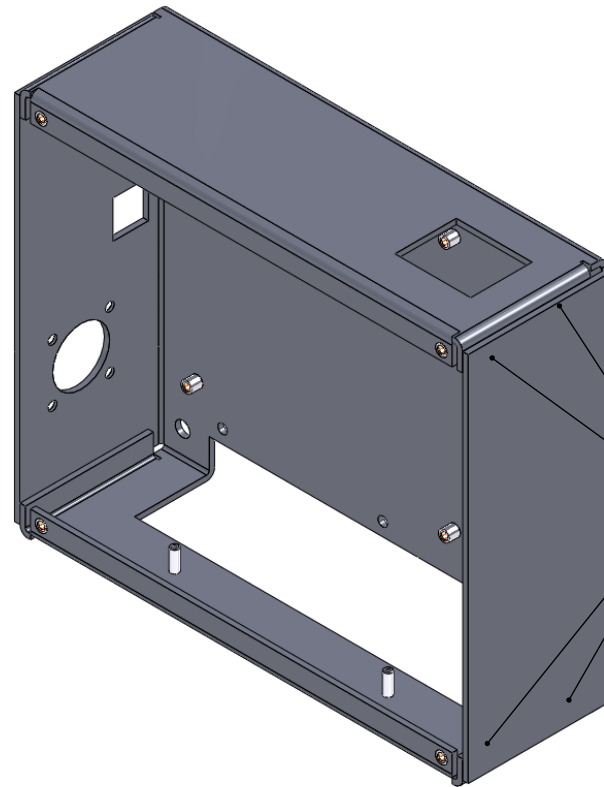
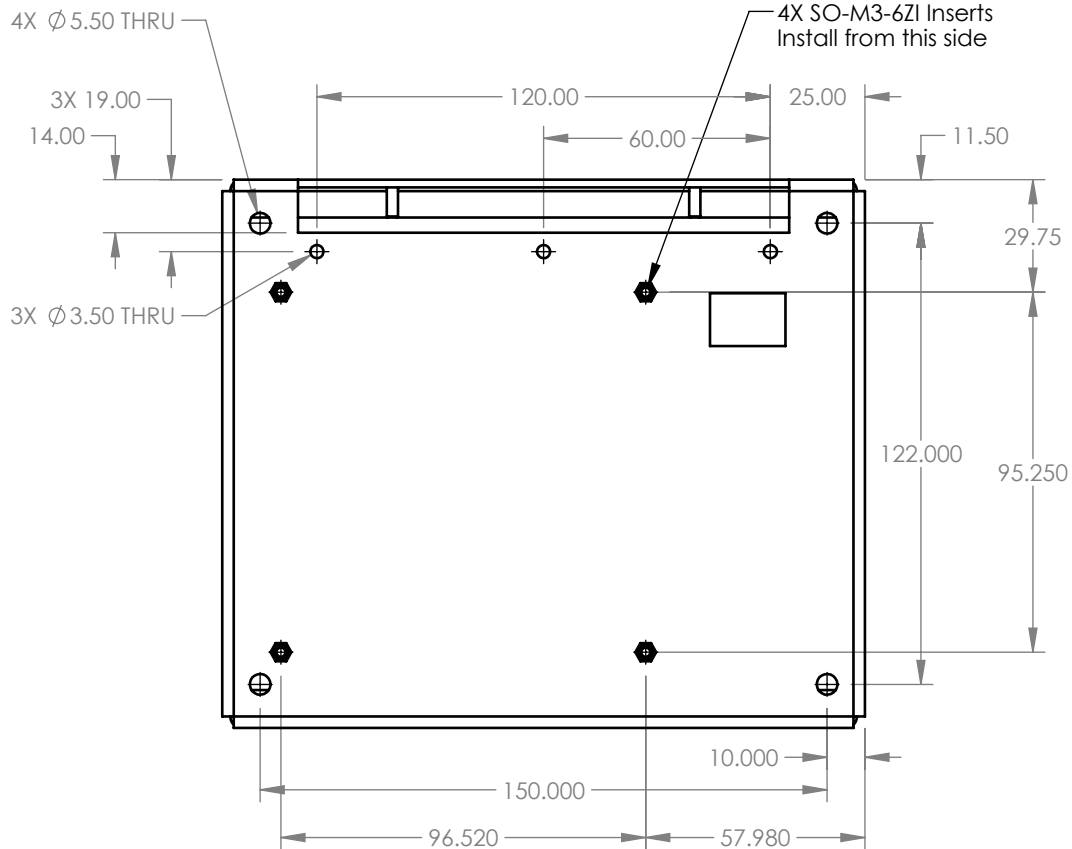
REV. A

SCALE 1:2 DO NOT SCALE DRAWING SHEET 1 OF 1

2X FH-M3-10ZI Inserts
Install from this side



SECTION A-A



Spot weld 2x
on each tab



Sinnema Design Services

seth.sinnema@gmail.com
Phone: (303) 250-8218
Fax: 1-267-393-7872

TITLE

Sheet Metal Enclosure

SIZE
A

DWG NO.

REV.
A

SCALE 1:2

DO NOT SCALE DRAWING

SHEET 1 OF 1