

START HERE: UNPACKING YOUR TAZ 3D PRINTER

Read this [Quick Setup Guide](#) for the correct unpacking and setup.

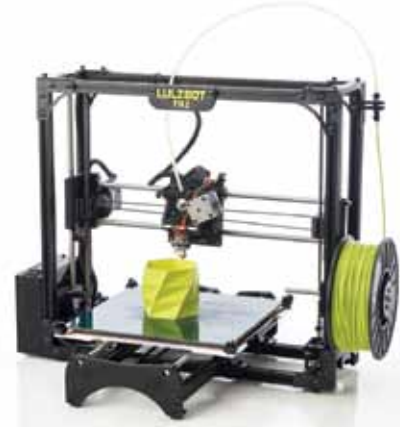
Note:

Save all packing materials, packing clips, inserts, and the box in case you need to ship your printer.



View a video of
the **Quick Setup Guide**

lulzbot.com/support/taz-unpacking



- 1** Remove the Accessory Tray foam insert from the box, set aside.



- 2** While keeping printer in the box, pick up by the black aluminum frame and rotate the printer and foam 90 degrees — setting it upright within the box. Make sure name plate at top is UP.



- 3** Remove top foam.



- 4 A** Remove the printer bed assembly (Y-axis) packed in the body of the printer by sliding it up 6", freeing it from the packing foam.



- B** Rotate printing bed assembly, tilting the bottom toward front of box.



- C** Lower entire bed into box so it is parallel with printer frame, then lift out and set aside.



- 5** While pushing down on bottom foam, carefully remove printer frame from box. Set it on a sturdy, flat surface for assembly.



NEXT STEP: Setting up your printer.

SETTING UP YOUR TAZ 3D PRINTER

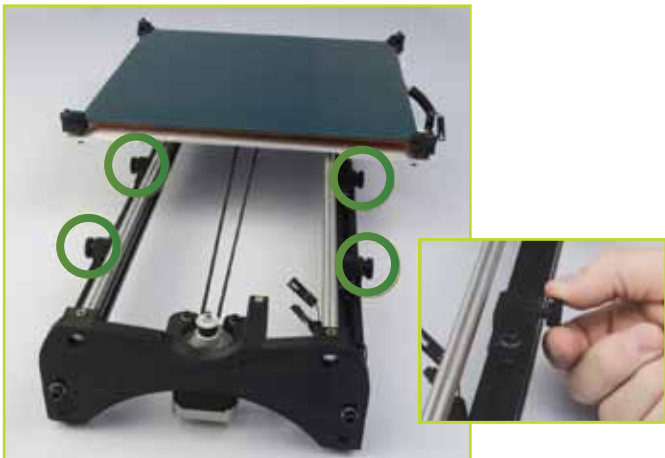
READ THE ENCLOSED USER MANUAL COMPLETELY BEFORE POWERING UP YOUR TAZ 3D PRINTER.

Mounting Printer Bed (Y Axis) to Printer Frame

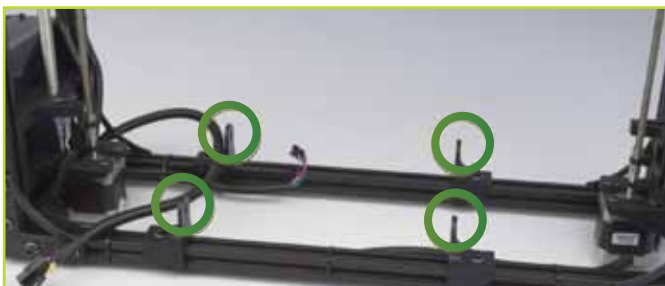
1 Place the TAZ frame and Y axis assembly on a flat and level surface. Remove the protective bubble wrap from printing bed.



2 Locate the four Y axis bolts (see green circles below). Turning counter clockwise, remove each of the four Y axis bolts and set aside.



3 Locate the four Y axis mount brackets on the TAZ frame.



4 With the print surface facing up and the stepper motor end of the Y axis facing back, slide the Y axis assembly in between the Y axis mount brackets, aligning the holes on the brackets with the bolt holes on the Y axis assembly.

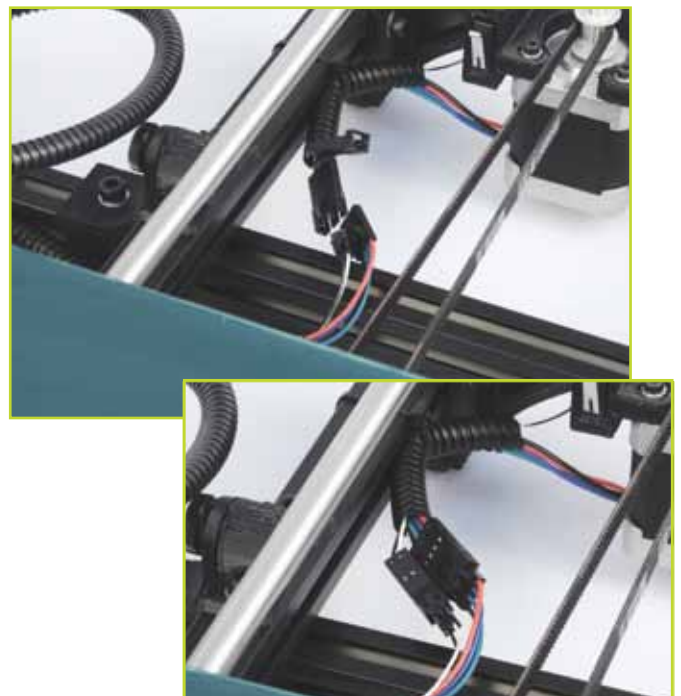
Thread the four Y axis bolts through the brackets, into the Y axis assembly.



Note:

Before completely tightening the Y axis bolts, make sure the printer bed (Y axis) aluminum bars are pushed down against the TAZ frame lower bars. You can do this by slightly tilting the printer, on the side edge, enough to lift the feet of the Y axis off of the table. The weight of the Y axis will seat it against the TAZ frame. While the printer is slightly tilted, tighten the four Y axis bolts.

5 Pull the print bed completely to the front of the printer to access the Y axis connectors. You will find matching male and female 4-pin stepper motor connectors and 2-pin end stop connectors. Connect the print surface connectors and Y axis connectors by matching the male and female connectors. The connector will click to ensure it is locked.



6 Locate the two connectors to the left of the print bed. Connect the matching female and male large 2-pin heat bed connectors and the small 2-pin connectors.



7 Locate the two small black zip ties that are included in the documents bag. Wrap the two zip ties through the slot, located on the left rear of the aluminum bed plate, and around the print bed wires. Tighten the zip ties so the wire cannot move freely. Cut off the excess end of the zip ties with the needle-nose pliers included in the tool bag.

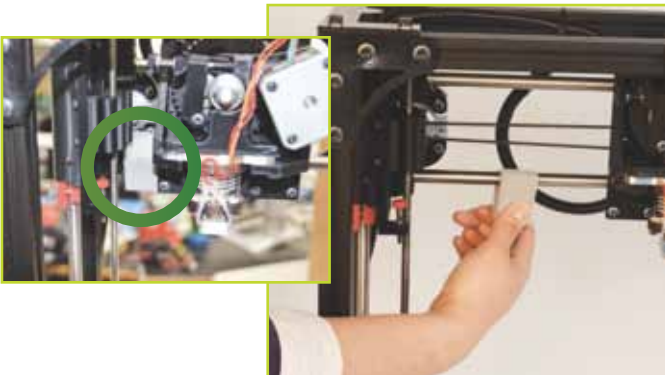


Note:

Note: Make sure your printer work space is clear of anything that could obstruct the movement of the printer, and that there are no flammable fabrics or liquids near the printer space. It is also best to not put your printer near a drafty window or air conditioner vent.

Remove Protective Pieces

8 Locate and remove the gray foam block next to the printer head used to hold the extruder assembly in place during shipping.



9 Remove protective orange packing clips used to hold the X-axis in place during shipping.



Attaching Power Supply

10 Locate and unwrap the power supply, USB cables, and AC power cable. **MAKE SURE THE POWER SUPPLY IS COMPLETELY UNPLUGGED BEFORE MOVING ON TO THE NEXT STEP.**



11 Locate the power supply and USB connectors, and DC power receptacle on the back of the TAZ electronics enclosure.



12 Connect the DC locking plug into the DC connector on the TAZ electronics enclosure.



The plug is keyed which may require rotating the plug until the keys line up and the plug can be pushed in. Once you have pushed in the plug turn the locking sleeve clockwise until it is tight against the electronics enclosure.

Plug in the USB cable, B plug (square plug) side, into the USB receptacle on the printer electronics. Plug the other end of the USB cable, A plug side, into your computer.

Attaching Filament Guide

13 Locate the filament guide with attached PTFE tube.

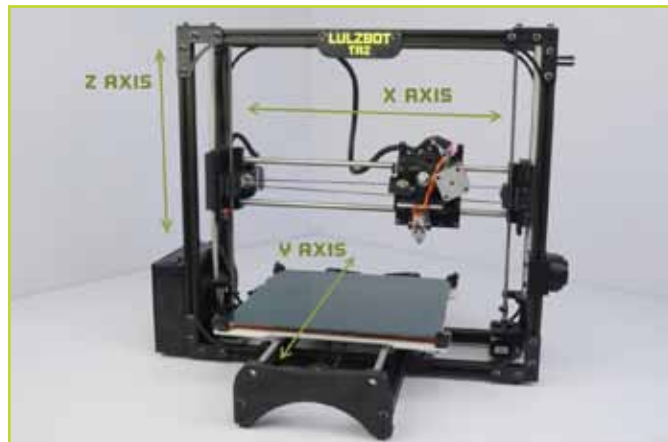


14 The filament guide attaches to the filament guide mount which can be found on the top right side of the printer frame. The filament guide easily pops on to the guide mount.



Before printing, familiarize yourself with the TAZ cartesian type system

The printer moves in three axes: X, Y, and Z. These three axes allow the tool head to move to any point within the print area. Note the location of the mechanical end stops, which are small switches located at the home point of each axis. Each end stop switch allows the printer to find the home, or starting point, of each axis.



The mechanical endstops should never be blocked during the initial homing function or during a print.

