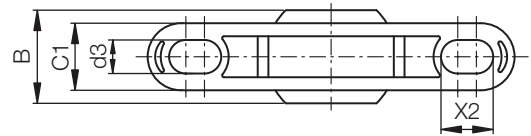
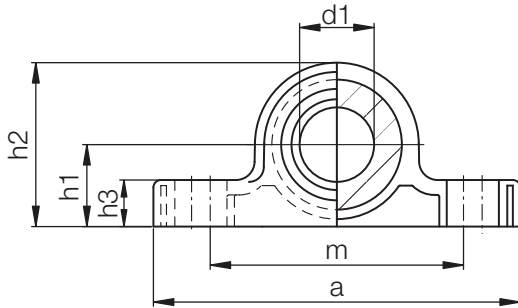




igubal®

**igubal® Pillow Block Bearing
KSTI - Inch**

Material:
Housing - igumid G
Ball - iglide® L280



Dimensions (inch)

Part Number	d1 E10	B	C1	h1	h2	h3	a	m	d3	X2	Max. Angle of Pivot
KSTI-03	.1900	.312	.234	.290	.566	.165	1.4000	1.000	.137	.200	25°
KSTI-04	.2500	.375	.250	.390	.705	.205	1.7500	1.250	.137	.250	25°
KSTI-05	.3125	.437	.312	.430	.824	.236	1.9500	1.350	.150	.280	25°
KSTI-06	.3750	.500	.359	.550	1.022	.376	2.4000	1.800	.180	.300	22°
KSTI-07	.4375	.562	.406	.570	1.082	.315	2.5000	1.850	.205	.330	22°
KSTI-08	.5000	.625	.453	.600	1.191	.354	2.8000	2.000	.205	.380	22°
KSTI-10	.6250	.750	.484	.700	1.409	.413	3.3500	2.300	.205	.470	22°
KSTI-12	.7500	.875	.593	.860	1.687	.472	3.7500	2.700	.270	.530	22°
KSTI-16	1.0000	1.375	1.005	1.100	2.163	.630	5.0000	3.500	.520	.680	20°

► Tolerance Table, Page 1.14

Load Data

Part Number	Maximum Static Tensile Strength		Maximum Static Axial Compressive Strength	Maximum Torque for Longitudinal holes	Weight
	Short-term (lbs)	Long-term (lbs)			
KSTI-03	124	62	79	0.4	1.7
KSTI-04	135	67	90	0.4	2.8
KSTI-05	180	90	112	0.6	4.5
KSTI-06	225	112	135	1.0	7.5
KSTI-07	247	124	157	1.8	9.7
KSTI-08	270	135	169	1.8	13.5
KSTI-10	472	236	202	1.8	21.5
KSTI-12	697	348	360	3.3	33.4
KSTI-16	1214	607	495	7.7	85.8

KSTI - Inch

Telephone 1-800-521-2747
Fax 1-401-438-7270

QuickSpec: <http://www.igus.com/iglide-quickspec>

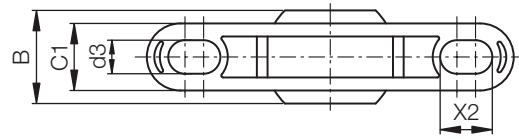
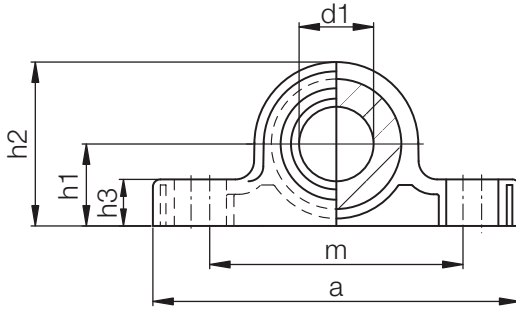
Internet: <http://www.igus.com>
email: sales@igus.com

igubal® Pillow Block Bearing KSTM - MM



Material:

Housing - igumid G
Ball - iglide® L280



Dimensions (mm)

Part Number	d1 E10	B	C1	h1	h2	h3	a	m	d3	X2	Max. Angle of Pivot
KSTM-05	5	8	6.0	7	14	4	34	25	3.3	5	30°
KSTM-06	6	9	7.0	10	18	5.5	43	33	4.5	6	29°
KSTM-08	8	12	9.0	10	20	6	47	33	4.5	7	25°
KSTM-10	10	14	10.5	14	26	7.5	62	46	5.5	8	25°
KSTM-12	12	16	12.0	14	28	8.5	65	46	5.5	9	25°
KSTM-14	14	19	13.5	18	34	9.5	82	60	6.6	11	23°
KSTM-16	16	21	15.0	18	36	10.5	86	60	6.6	12	23°
KSTM-18	18	23	16.5	22	42	11.5	93	68	9.0	13	23°
KSTM-20	20	25	18.0	22	44	13	98	68	9.0	14	23°
KSTM-22	22	28	20.0	24	48	14	108	74	9.0	16	22°
KSTM-25	25	31	22.0	27	54	16	124	86	9.0	17	22°
KSTM-30	30	37	25.0	32	64	17	139	96	11.0	20	22°

► Tolerance Table, Page 1.14

Load Data

Part Number	Maximum Static Tensile Strength		Maximum Static Axial Compressive Strength	Maximum Torque for Longitudinal holes	Weight
	Short-term (lbs)	Long-term (lbs)			
KSTM-05	157	78	90	0.4	1.7
KSTM-06	247	123	90	1.0	2.9
KSTM-08	292	146	180	1.0	4.6
KSTM-10	337	168	247	1.8	8.6
KSTM-12	494	247	259	1.8	11.8
KSTM-14	539	269	270	3.3	18.4
KSTM-16	674	337	405	3.3	23.7
KSTM-18	786	393	427	7.7	32.2
KSTM-20	1056	528	562	7.7	40.0
KSTM-22	1371	685	607	7.7	54.0
KSTM-25	1483	741	719	7.7	75.3
KSTM-30	1820	910	843	15.9	116.8

KSTM - MM

PDF: www.igus.com/iglide-pdfs
CAD: www.igus.com/iglide-CAD
RoHS info: www.igus.com/RoHS

